

Figure JT.1. VPR survey from Ross Bank to Pennell Bank, across Joides Trough to Mawson Bank, northeastward along the crest of Mawson Bank, and then back across Joides Trough to Pennell Bank (VPR10).

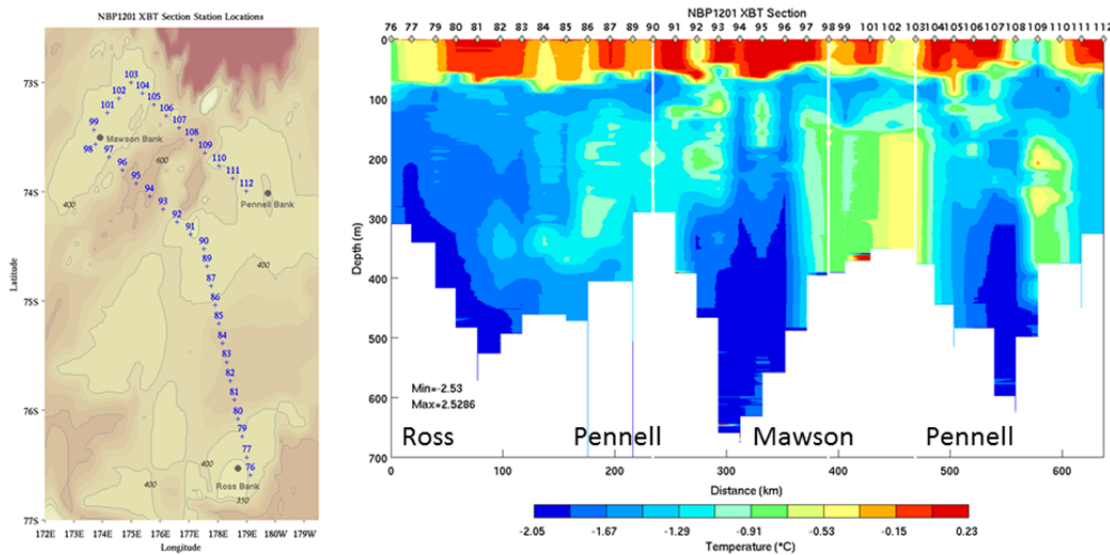
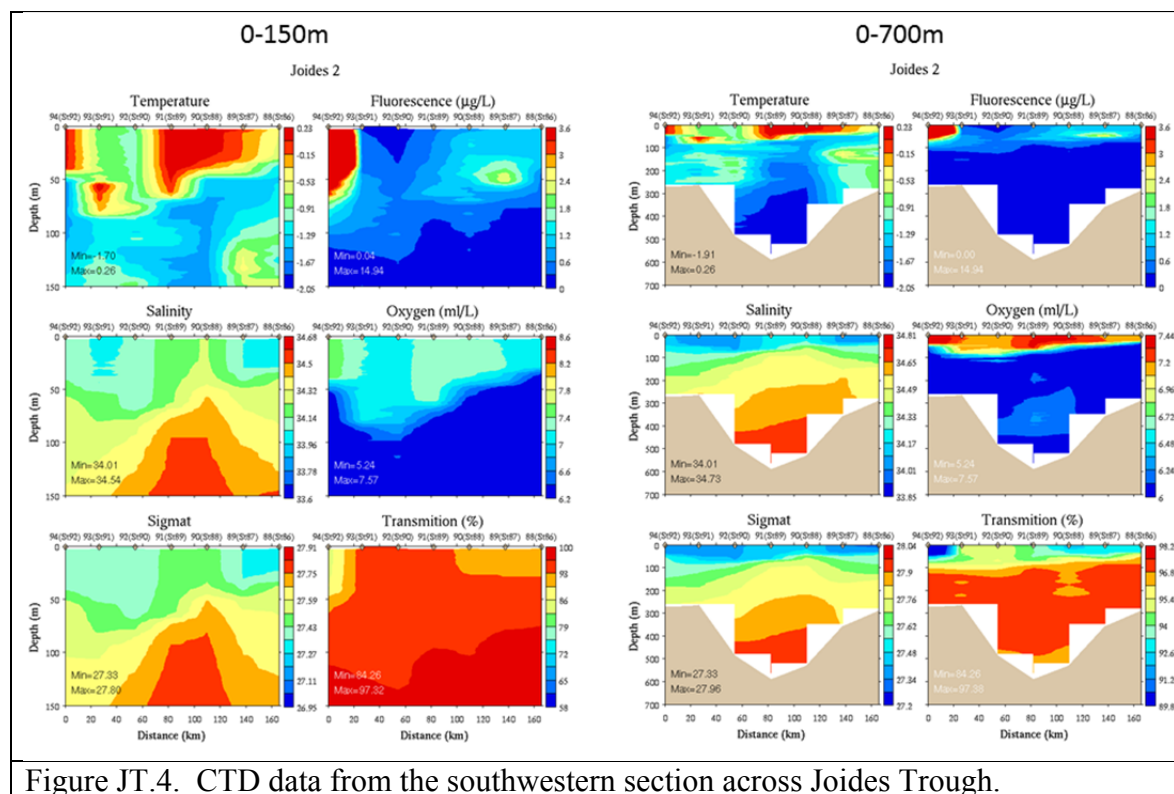
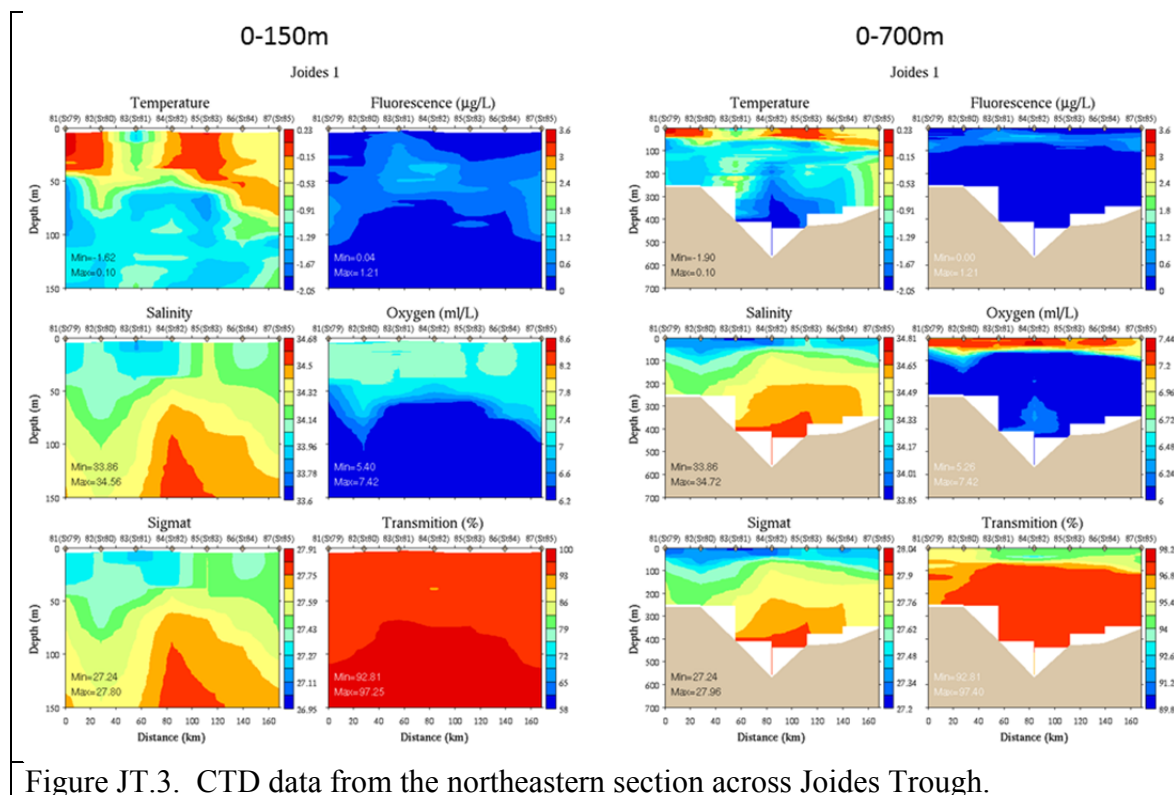


Figure JT.2. XBT survey from Ross Bank to Pennell Bank, across Joides Trough to Mawson Bank, northeastward along the crest of Mawson Bank, and then back across Joides Trough to Pennell Bank. Turning points in the XBT section are indicated as white vertical lines.



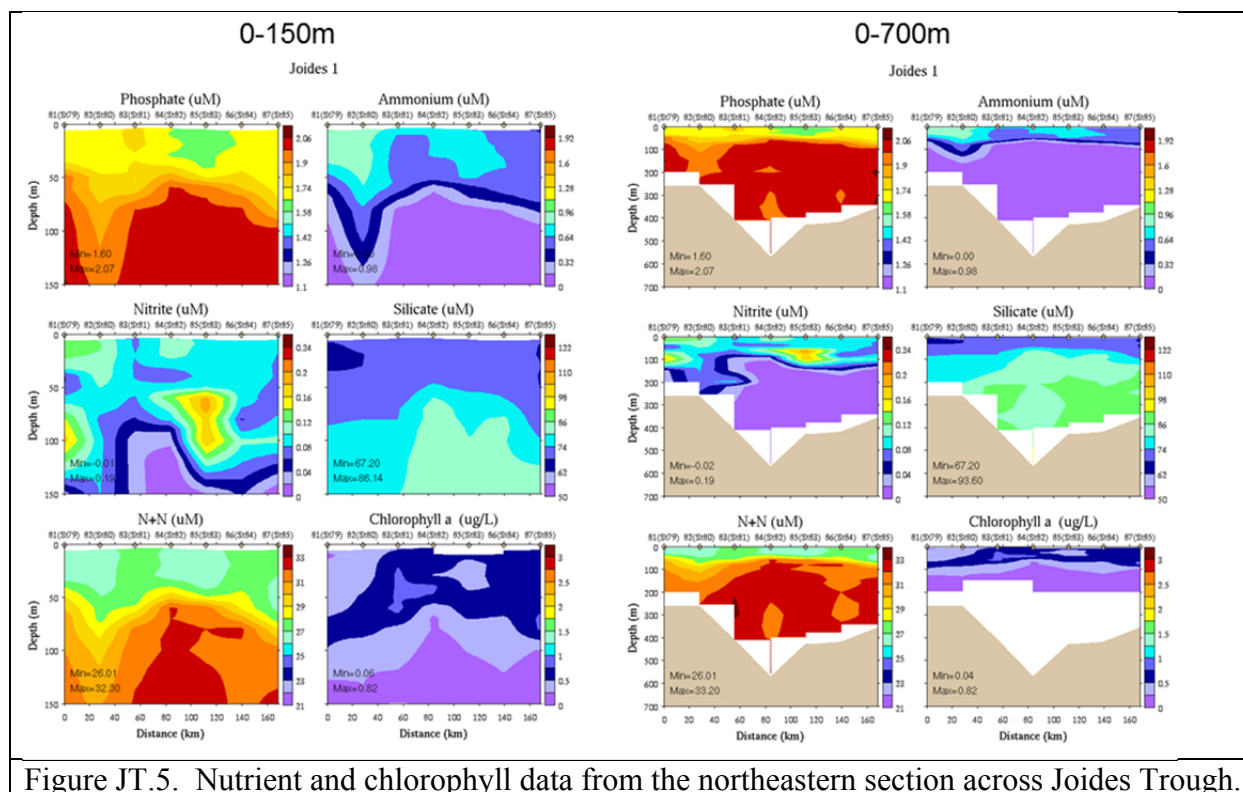


Figure JT.5. Nutrient and chlorophyll data from the northeastern section across Joides Trough.

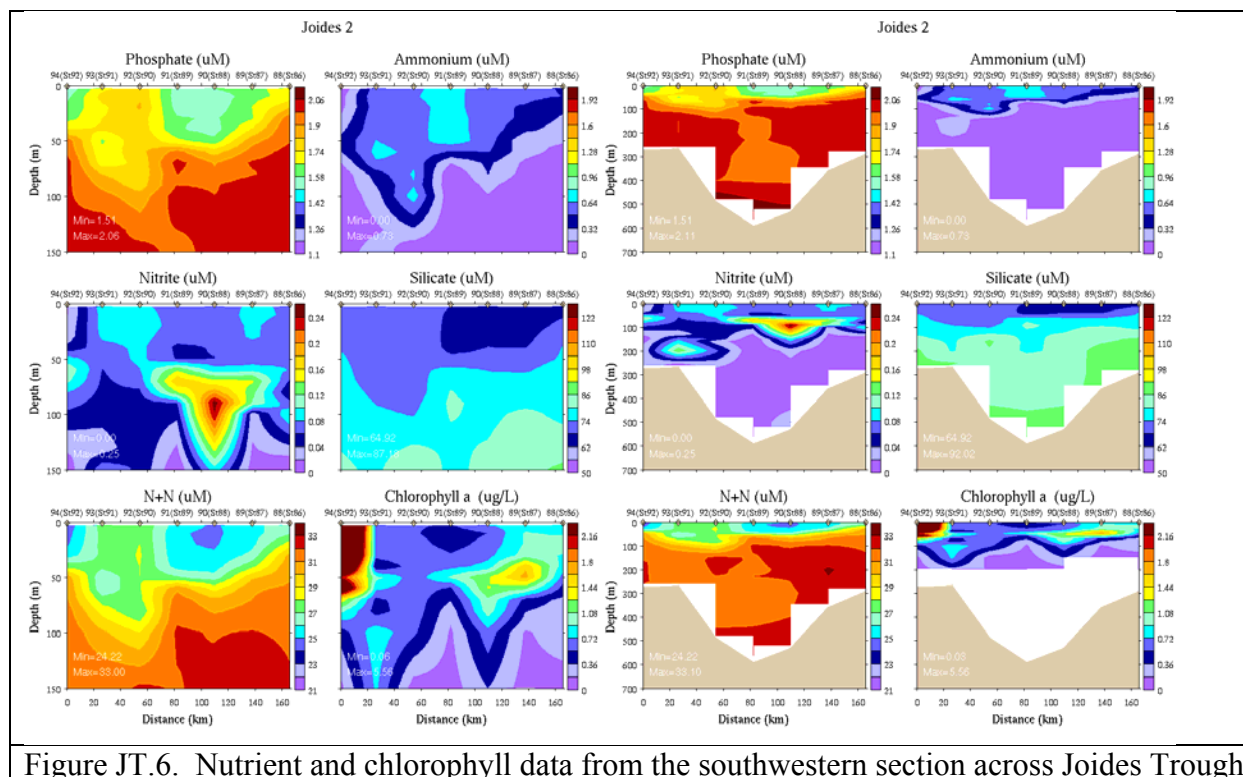


Figure JT.6. Nutrient and chlorophyll data from the southwestern section across Joides Trough.

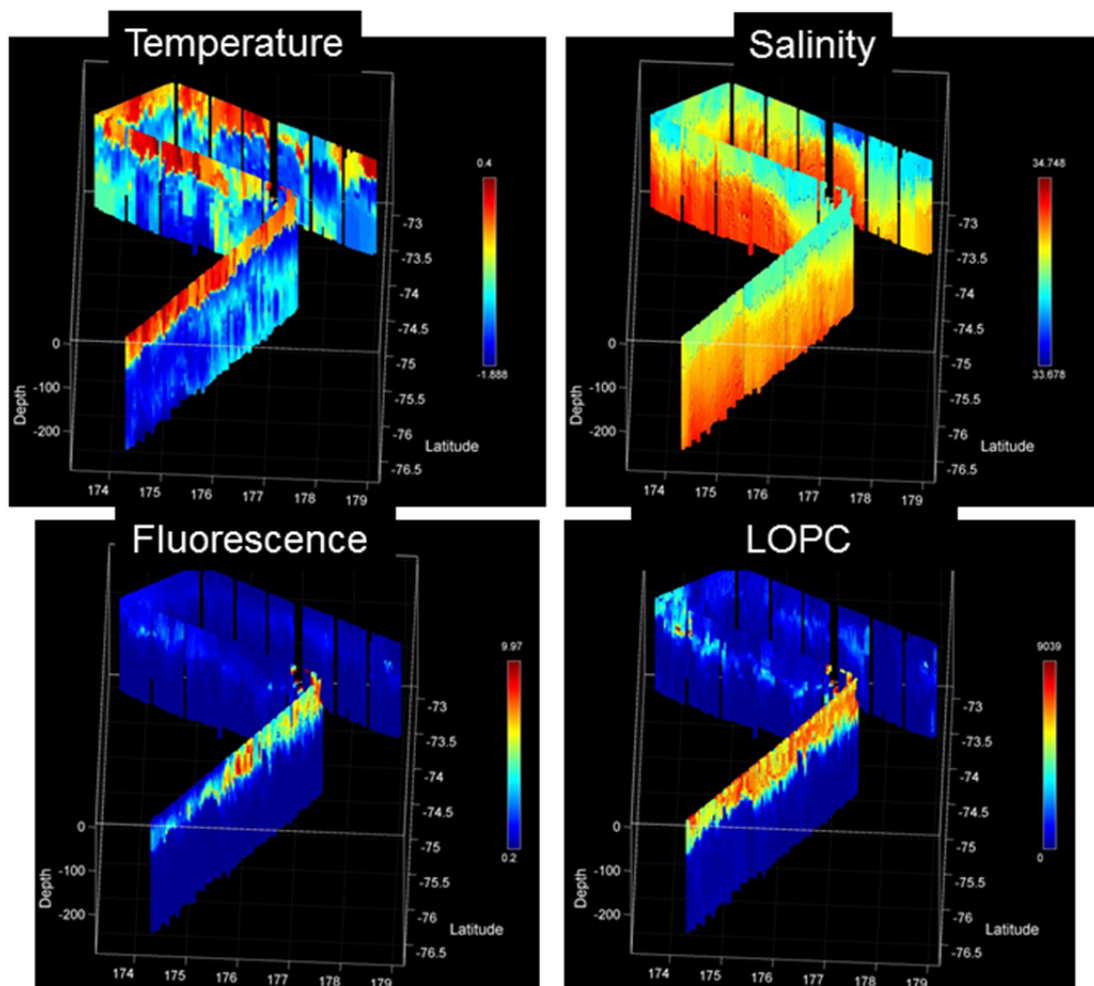


Figure JT.7. MVP survey along the two Joides Trough transects and then southward to the western Ross Sea.